



FELLOWSHIP SQUARE
PHOENIX

2002 W Sunnyside Ave | Phoenix, AZ 85029
www.FellowshipSquarePhoenix.org
602-443-5427



December comes but once a year,
Bringing tidings of good cheer.
First join us to trim the tree,
Then later for milk and cookies.
Hop aboard the Polar Express,
As we go on outings, no time for rest.
We'll have some caroling and other fun,
Movies and crafts, we've just begun!
Chaplain will have a Christmas service,
To honor Jesus with due worship.
This month Santa's coming to town,
So on the 20th come on down.
On New Year's Eve come join the party,
We'll end the year feeling hearty.

DECEMBER



2024

WELCOME HOME!



Robert C.



Clara T.



Peggy E.



Carol B.

Louise C.

Rick & Carrie W.

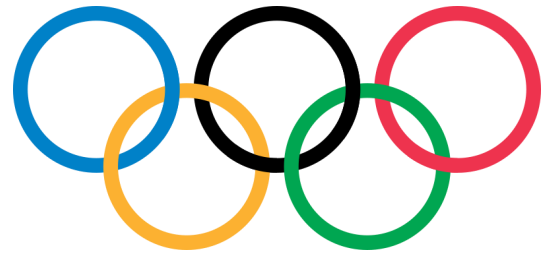


Camille & Hank T.



CHRISTIAN CARE
FELLOWSHIP SQUARE

Customer Service Employee Olympics



Employee Olympics is a staff recognition program in which you nominate an employee for providing outstanding customer service.

Olympic Medal Winners are announced quarterly and receive medals, monetary incentives as well as a special appreciation breakfast. Pickup a nomination form at the concierge desk.

Be sure to give specific examples or reasons for nomination.



FELLOWSHIP
SQUARE
PHOENIX

WITH
Heartfelt
SYMPATHY



Glen B.

*Be strong and
courageous. Do not
be afraid; do not be
discouraged, for the
LORD your God will
be with you
wherever you go.*

-Joshua 1:9

Rain or shine, Curana
Health is there for you.
No need to leave
the comfort of your
community.

Meet the Curana Health team!



Dr. Cody
Guggenmos



Stephanie
Martinez, DNP



Brinda
Patel, NP



Jennifer Swinney,
Medical Assistant

Call to schedule an appointment **602-613-5917**

Vet-to-Vet Cafe



Thursday, December 19th at 10:00AM in the Activity Room

Music & Melodies



Tuesdays in December at 10:00AM in the Dining Room

Got Milk



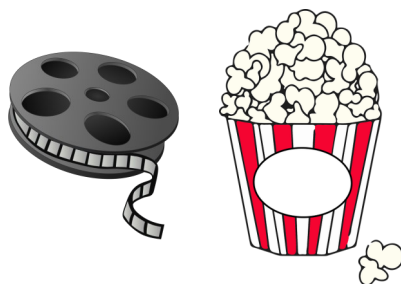
Friday, December 6th at 3:00PM in the Garden Cafe

Happy Hour: Caramel Apple Cider Christmas Karaoke



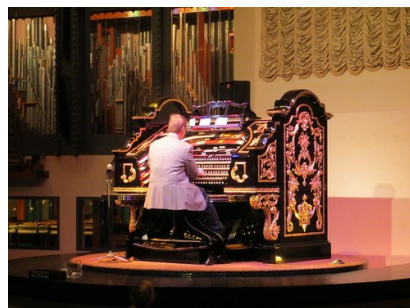
Friday, December 13th at 3:00PM in the Library

Cinema Saturday



December 7th and 21st at 1:30PM in the Activity Room

Dinner Out: Organ Stop Pizza



Monday, December 9th at 3:30PM (Sign Up)

Winning Wednesdays



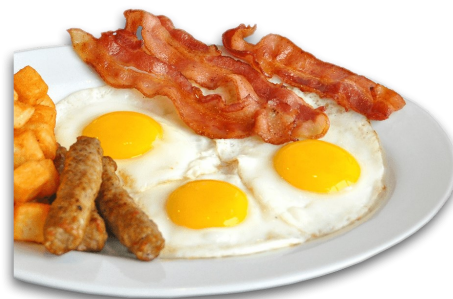
Wednesdays in December at 1:00PM in the Activity Room

Winedown Wednesday



Wednesday, December 18th at 6:00PM in the Activity Room

Breakfast Out: IHOP



Monday, December 23rd at 8:00AM (Sign Up)

**Santa & Mrs.
Claus**



Friday, December 20th
at 2:00PM in the
Prayer Garden

**Museum After
Dark**



Friday, December 6th
at 4:30pm (Sign Up)

**Thinking
Thursdays**



Thursdays in December
at 10:00AM in the
Garden Cafe

**GLOW BIG &
GLOW HOME**

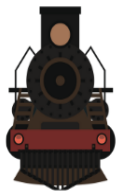
Ring in the new year right with good food,
good friends, and good music at our New
Year's Eve Party featuring April Yeager!

When: Tuesday, December 31st at 3:30pm

Where: The Dining Room

Sign up at the Concierge Desk

****This event is One Meal Charge****



NOVEMBER'S WESTERN WANDERINGS!



Lloyd Aycock (left) won the Bronze Medal in the ½ mile walk at the Senior Fitness Games.

Jerry Burroughs (right) won the Silver Medal in the ½ mile walk at the Senior Fitness Games.



CHRISTIAN CARE
REHABILITATION CENTER

Fellowship Square Residents,
We are here to provide exceptional, compassionate care when you need it, regardless of your insurance plan. If you are ever in the hospital and are ready to move to your next step in recovery, let the hospital know you wish to return home to your Rehab.

We will take care of the rest!

If you would like more information or would like to stop in for a tour, please call our Admissions Department at 480-689-0781.

CHRISTMAS—The very word suggests excitement and a flood of various memories about the day and the season. But I want us to look past the gifts, family dinners, holiday parties, shopping and wrapping experiences of the holiday and focus on one fact about Christmas this year. Nothing says love like Christmas.



No, I don't mean our love, many of us have had heartbreaks at Christmas because family, friends, or loved ones have hurt us or betrayed us at that time. No, I am talking about the love of God that allowed Him to send His Son Jesus to the earth—that love.

The step down from heaven to earth was spectacular. In one, Jesus set on a throne, was worshipped by heavenly beings constantly, was valued for His omnipotence and His Omnipresent love, was the center of existence for all of our galaxy's; and on the other was an animal shelter with straw in an animal's feeding trough for a bed, a doubtful world, people questioning who He was and why was He born so early in the marriage of Mary and Joseph, He was seen as fairly helpless and under need of great care except for a few, and He was the center of no one's existence. That kind of love is hard to imagine since none of us have ever been as exalted as Jesus and I doubt if many of us were ever as humbled as Jesus became.

It was quite a feat to become one of us so that we could belong in heaven to Jesus and Our mutual Dad—Father God. It involved sacrifice beyond imagination. It was Love,

My love to you, Chaplain Tom

Staff Directory

Activity & Event Coordinator	Sarah Garcia Sarah.Garcia@christiancare.org	602-443-5421
Activities Assistant	Katy Freitas Katlynn.Freitas@christiancare.org	602-424-9426
Beauty Barber Shop	Sue Widdison	602-443-5422
Business Director/HR	Jennifer Sheppard Jennifer.Sheppard@christiancare.org	602-424-9427
Chaplain	Dr. Tom Haney Thomas.Haney@christiancare.org	602-443-5486
Concierge Desk	Volunteers	480-385-0266
Dining Room Meals	Take Out Orders	602-443-5424
Dining Room Supervisor	Esperanza Alcantar Esperanza.Alcantar@christiancare.org	602-443-5468
Director of Operations	Susan O'Connell Susan.Oconnell@christiancare.org	480-385-0065
Director of Resident Experience	Amy Borders Amy.Borders@christiancare.org	602-443-5419
Executive Chef	Miguel Valdez Miguel.Valdez@christiancare.org	602-443-5425
Fellowship Square Sales	Sherri Martin, Rozelle Davis, Dawn Heinlein Sherri.Martin@christiancare.org	602-443-5427
Front Desk	Tierra/Yesenia Tierra.Armenta@christiancare.org	602-443-5427
Home Health	Office Manager	602-443-5447
Housekeeping Services	Quatasha Warren Quatasha.Warren@christiancare.org	602-443-5420
Resident Navigator	Rebecca Uhl Rebecca.Uhl@christiancare.org	480-385-0267
Security	Customer Service	602-443-5400
Social Services Coordinator	Jamie Childress Jamie.Childress@christiancare.org	602-443-5417
Supportive Services	Peggy McIntyre Peggy.Mcintyre@christiancare.org	480-254-7941
Transportation	Tony Lopez Tony.Lopez@christiancare.org	602-424-9443
Wellness/Fitness Center	Ben Evans/Leticia Martinez bevans@fprehab.com	602-443-5484
Work Orders	Maintenance Work Orders phxworkorder@christiancare.org	602-424-9432