



FELLOWSHIP SQUARE
PHOENIX

2002 W Sunnyside Ave | Phoenix, AZ 85029
www.FellowshipSquarePhoenix.org
602-443-5427

★ Lullaby of ★ BROADWAY

SEPTEMBER
2025

This September “come on along and listen to the Lullaby of Broadway!” Get ready to take center stage and join us for a month full of music, laughter, and show-stopping fun! We'll enjoy a beautiful on-campus opera recital, go on an exciting outing to the Hale Theatre, and Cinema Saturdays will feature musicals on the big screen that will have you singing along in your seats. Don't miss our resident talent show, where your neighbors take the spotlight and reveal their hidden talents! Amongst all the lights, music, and applause, we're also making time to learn how to protect yourself in the digital age—because every star deserves to shine safely. And who could forget the best week of the month? *Resident Appreciation Week!* Each day we will have a dress-up theme and a special treat just for YOU—our favorite resident!

STAFF NEWS



We are so excited to welcome Miguel to the team! You can find him at the front desk.

FELLOWSHIP SQUARE GIFT SHOP

Hours

Monday-Friday 10:00AM-2:00PM

Saturday 12:00PM-2:00PM

Sunday
CLOSED



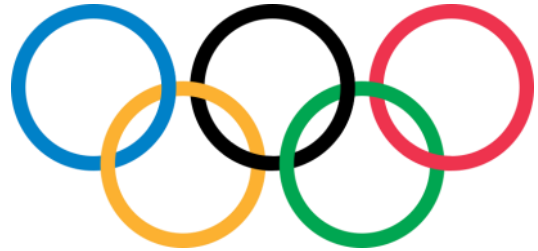
Contact: Pat Batt 941-408-5867



CHRISTIAN CARE
FELLOWSHIP SQUARE

Customer Service

Employee Olympics



Employee Olympics is a staff recognition program in which you nominate an employee for providing outstanding customer service.

Olympic Medal Winners are announced quarterly and receive medals, monetary incentives as well as a special appreciation breakfast. Pickup a nomination form at the concierge desk.

Be sure to give specific examples or reasons for nomination.



FELLOWSHIP
SQUARE
PHOENIX

The Curana Health Clinic is an on-site health clinic located in the main building.

Schedule your appointment today, or walk in!



Primary Care Services



Vaccinations



Sick Visits or Urgent Care



And much more!



Diagnostics

602-613-5917

Monday – Friday, 9 a.m. – 5 p.m.



A vibrant red poster for a talent show. The background is a deep red with a subtle vertical crease. In the top left corner, there are three gold stars of varying sizes. The top right and bottom left corners are decorated with gold confetti and streamers. The title 'TALENT SHOW' is prominently displayed in the center. 'TALENT' is in a bold, white, sans-serif font. 'SHOW' is in a larger, bold, red font with a yellow outline and filled with numerous small, glowing yellow lights. Below the title, the date and time are listed. '19 SEP' is in a large, bold, white font. 'AT 11AM' is in a slightly smaller, bold, white font. Below 'AT 11AM', the location 'In the Activity Room' is written in a smaller, white, sans-serif font. A paragraph of text follows, describing the event. At the bottom, a yellow rectangular box contains the sign-up information in a bold, dark red font.

TALENT SHOW

19 **AT 11AM**
SEP In the
Activity Room

Get ready for a morning filled with laughter, applause, and unforgettable performances! Whether you sing, dance, tell jokes, or reveal a hidden talent, this is your time to shine.

Sign up at the concierge desk!

Meal Out: Brunch Snob



Monday, September 8th
at 9:00AM (Sign Up)

Meal Out: The Liberty Tavern



Monday, September
22nd at 3:30PM
(Sign Up)

Curana Presentation



Thursday, September
11th at 9:00AM in the
Activity Room

Resident Appreciation Week

We  you

September 22-26
See your calendar for
daily details!

Activity Chat



Friday, September 19th
at 1:30PM in the
Activity Room

New Image Fashion



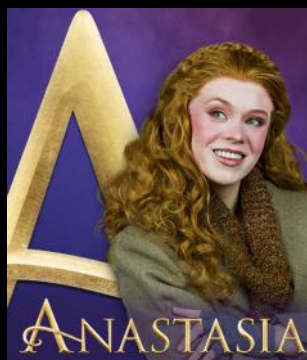
Thursday, September
25th at 10:00AM in the
Activity Room

GriefShare

GriefShare®

Tuesdays at 2:00PM in
the Private Dining Room

Hale Theatre



Friday, September 26th
at 6:00PM (Sign up with
Sarah or Katy)

Spotlight Serenade



Wednesday, September
10th at 3:00PM in the
Activity Room (Sign Up)



For more pictures & to follow us on social media, scan the QR codes!



Lullaby of Broadway



September's theme, "Lullaby of Broadway," invites us to embrace the joy of community and talent. Broadway has always been a place of creativity and expression, and this month, through Talent Shows, Spirit Days, themed dinners, and movie nights, we are reminded of the beauty in each of our unique contributions. As we celebrate Resident Appreciation Week, we honor the gifts, wisdom, and love shared by those in our community. Just like Broadway performances, our lives are part of a larger story, woven together by God's love.

Scripture: 1 Corinthians 12:4-7 (ESV)

"Now there are varieties of gifts, but the same Spirit; and there are varieties of service, but the same Lord; and there are varieties of activities, but it is the same God who empowers them all in everyone. To each is given the manifestation of the Spirit for the common good."

Paul reminds us that though our gifts differ, we are all empowered by the same God. Just like a Broadway show thrives on the unique talents of each performer, we are united in the gifts God has given us, contributing to the greater good of His kingdom.

This month, as we enjoy the events and celebrations, let's reflect on the talents God has entrusted to us and how we can use them to encourage and support one another. Let us appreciate and uplift each other in love, just as He has loved us.

Take Care & God Bless,

Chaplain Joey

Staff Directory

Activity & Event Coordinator

Sarah Garcia
Sarah.Garcia@christiancare.org
602-443-5421

Activities Assistant

Katy Freitas
Katlynn.Freitas@christiancare.org
602-424-9426

Beauty Barber Shop

Sue Widdison
602-443-5422

Chaplain

Joey Sampaga
Joey.Sampaga@christiancare.org
602-443-5486

Community Advancement Officer

Gene Sanders
Gene.Sanders@christiancare.org
602-682-2986

Concierge Desk

Volunteers
480-385-0266

Corporate Billing Specialist

Rebecca Uhl
Rebecca.Uhl@christiancare.org
480-385-0267

Dining Room Meals

Take Out Orders
602-443-5424

Dining Room Supervisor

Melissa Celaya
Melissa.Celaya@christiancare.org
602-443-5468

Director of Resident Experience

Amy Borders
Amy.Borders@christiancare.org
602-443-5419

Executive Chef

Jason DePeal
Jason.DePeal@christiancare.org
602-443-5425

Front Desk

Miguel Perez-Rodriguez
602-443-5427

Housekeeping Services

Quatasha Warren
Quatasha.Warren@christiancare.org
602-443-5420

Resident Navigator

Jesse Elwood
Jesse.Elwood@christiancare.org
602-443-9450

Sales & Marketing

Sherri Martin
Sherri.Martin@christiancare.org
602-385-1590

Rozelle Davis
Rozelle.Davis@christiancare.org
602-443-5490

Security

Customer Service
602-443-5400

Social Services Coordinator

Jamie Childress
Jamie.Childress@christiancare.org
602-443-5417

Supportive Services

Peggy McIntyre
Peggy.McIntyre@christiancare.org
480-254-7941

Transportation

Tony Lopez
Tony.Lopez@christiancare.org
602-424-9443

Vice President of Operations

Kerri Felix
Kerri.Felix@christiancare.org
602-443-5439

Wellness/Fitness Center

Ben Evans
Ben.Evans@christiancare.org
Dalila Carroll
Dalila.Carroll@christiancare.org
602-443-5484

Work Orders

Maintenance Work Orders
phxworkorder@christiancare.org
602-424-9432



**FELLOWSHIP
SQUARE
PHOENIX**